

Dear Customer,

We have recently upgraded our website to make it more secure.

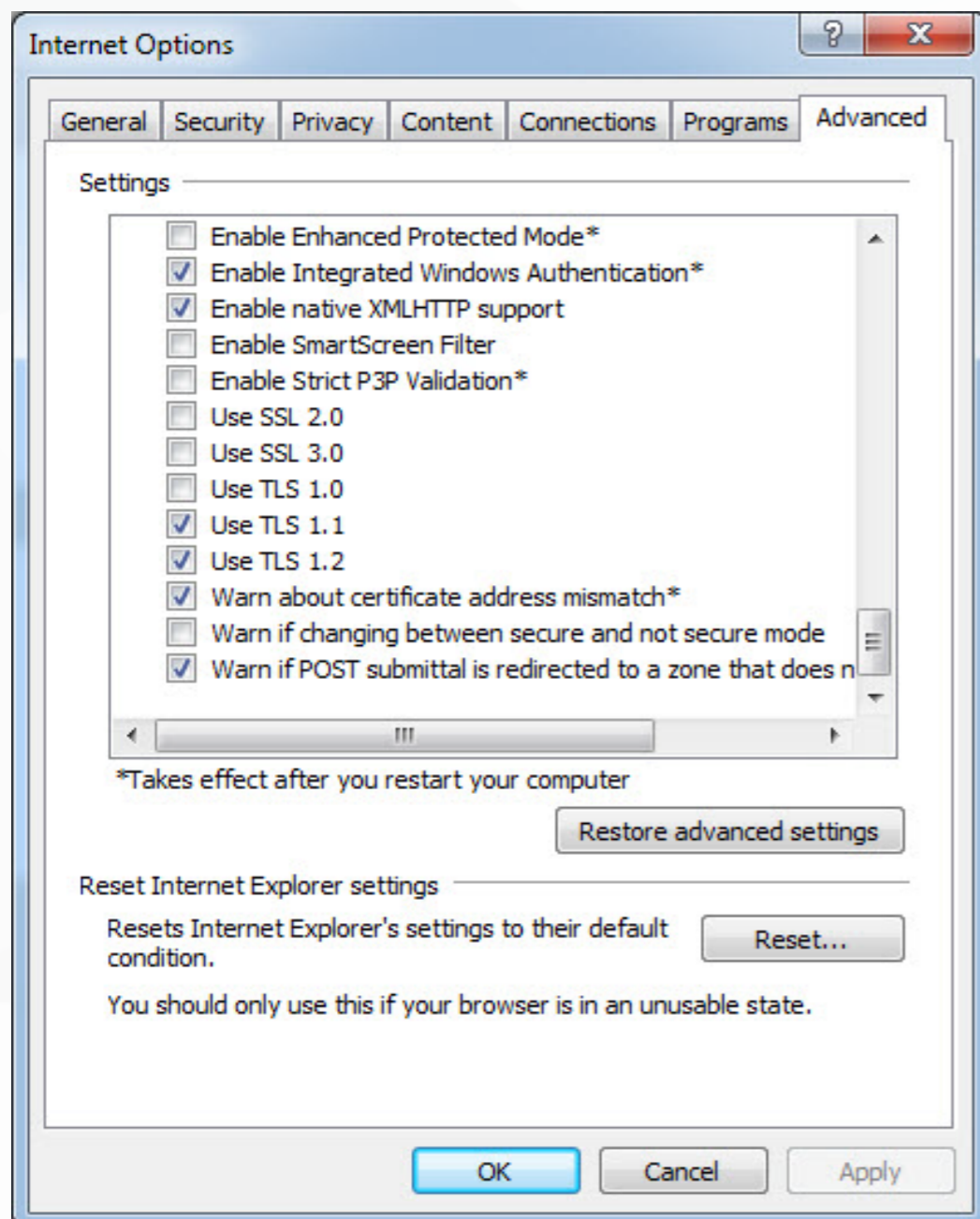
We are now supporting the TLS 1.2 protocol.

If you are facing any issue in payment, please ensure that you are using correct browser with appropriate configurations.

To make your browser support the TLS 1.2 protocol, please follow the below steps.

How to enable TLS 1.2 in Internet Explorer?

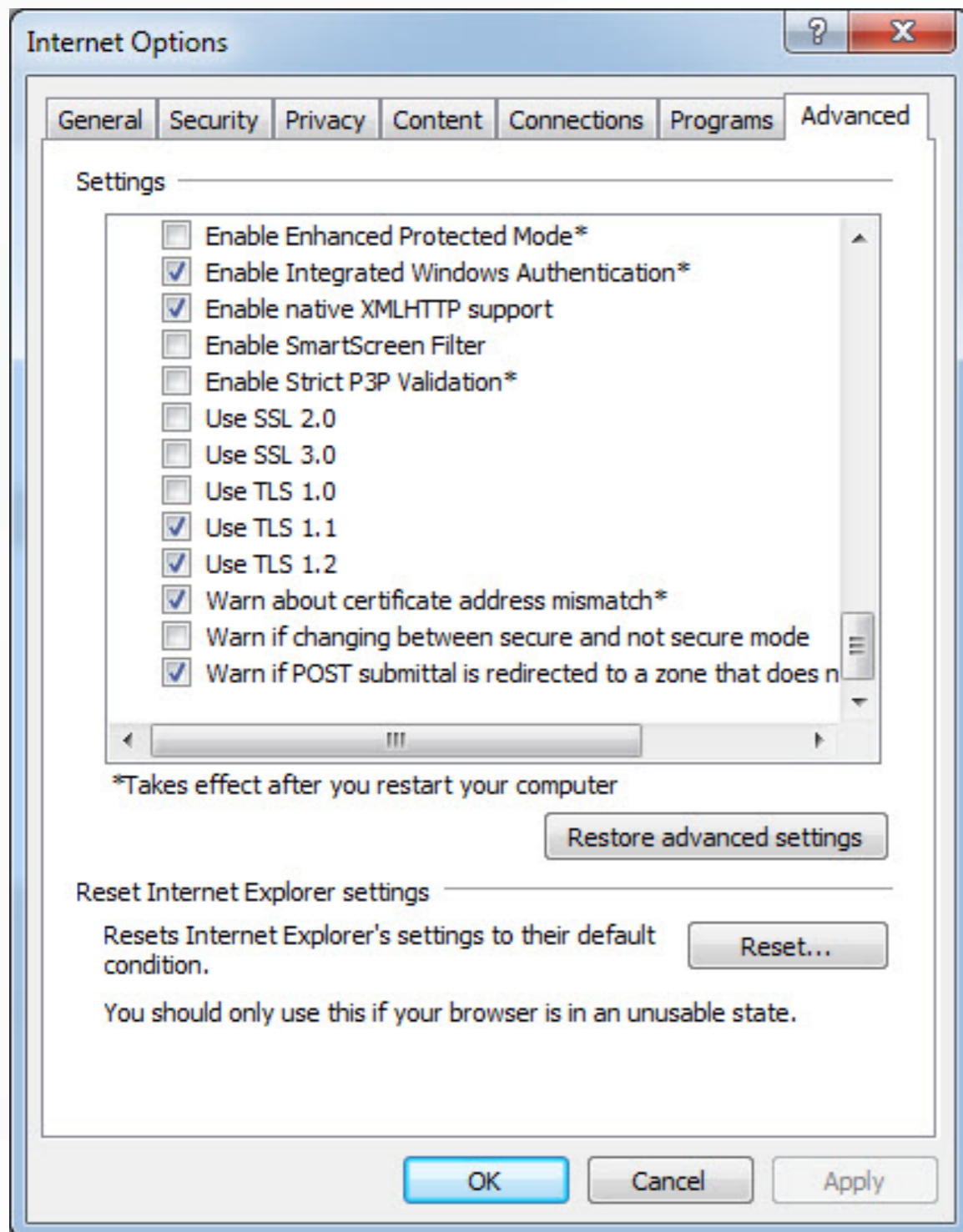
1. Open Internet Explorer
2. From the menu bar, click Tools > Internet Options > Advanced tab
3. Scroll down to Security category, manually check the option box for Use TLS 1.1 and Use TLS 1.2



4. Click OK
5. Close your browser and restart Internet Explorer

How to enable TLS 1.2 in Google Chrome?

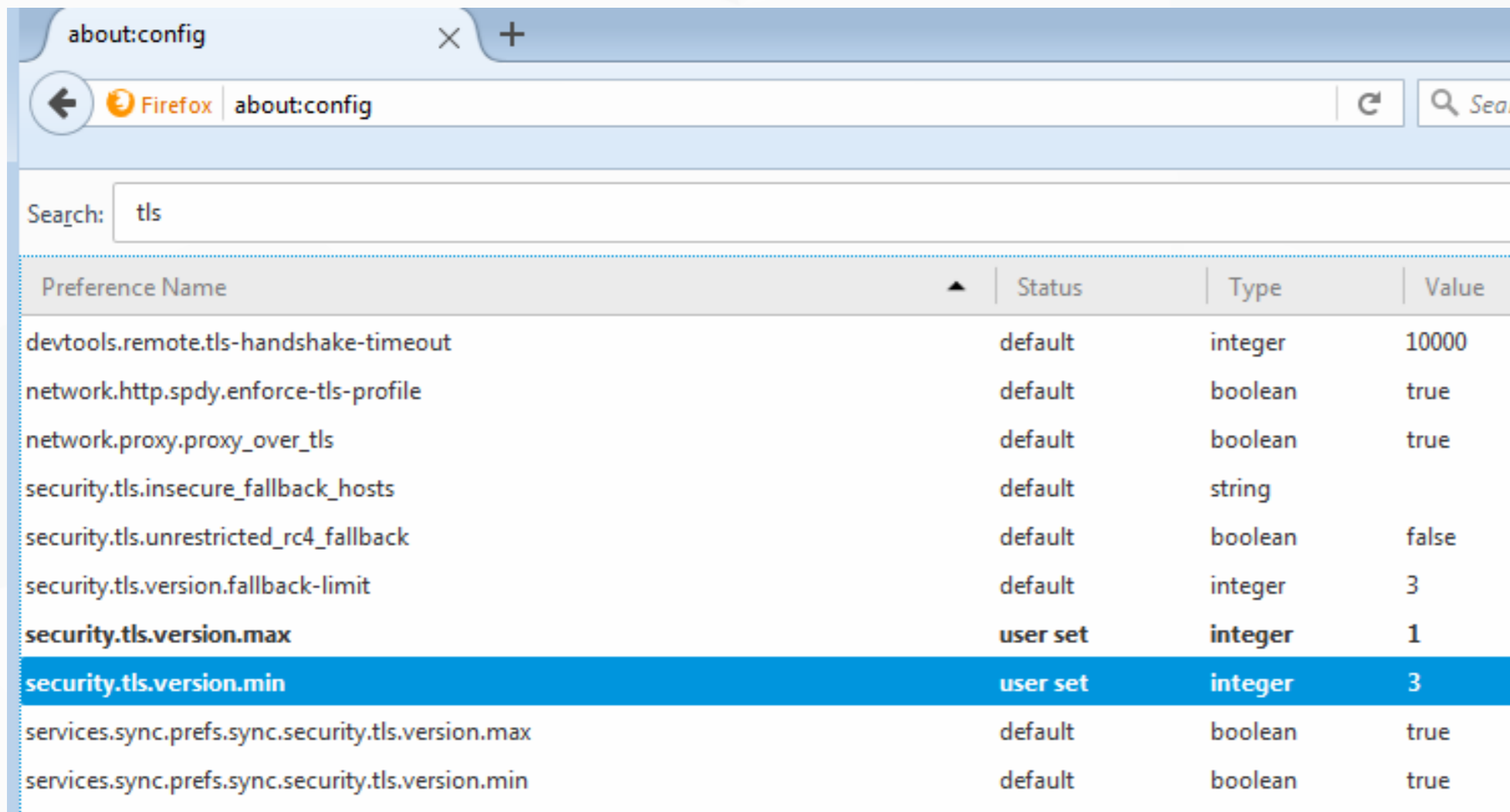
1. Open Google Chrome
2. Click Alt F and select Settings
3. Scroll down and select Show advanced settings.
4. Scroll down to the Network section and click on Change proxy settings...
5. Select the Advanced tab
6. Scroll down to Security category, manually check the option box for Use TLS 1.1 and Use TLS 1.2



4. Click OK
5. Close your browser and restart Google Chrome

How to enable TLS 1.2 in Firefox?

1. Open Firefox
2. In the address bar, type about:config and press Enter
3. In the Search field, enter tls. Find and double-click the entry for security.tls.version.min
4. Set the integer value to 3 to force protocol of TLS 1.3



5. Click OK
6. Close your browser and restart Mozilla Firefox

We would be happy to help you ensure compatibility in any way we can.
Please feel free to get in touch with us at info@lsnet.in in case of any concerns.
In case you wish to speak to us you may call 9910200126